

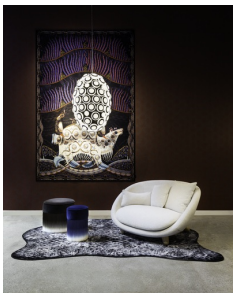
Iconic Eyes

BERNHARD DESSECKER



The first sparkle of this great idea was inspired by iconic automotive headlights. They have been modified to design a grand pendant light with a classy, powerful impact for the foyer of the Bavarian National Museum in Germany. The light's oval design is modern with a classic touch. It generates a precious ambient glow enhanced by bright rings of light and is produced in two sizes. Glorious and breathtaking in appearance, it consists of numerous lenses and a constellation of LED lights.

Detailing



Iconic Eyes consists of the characteristic headlights of a BMW MINI, which are placed in an oval shape and create an atmospheric glow.

Colours



Black Chrome

Iconic Eyes / Iconic Eyes 161

Dimensions

77cm | 30.3"



119cm | 46.9"

Product

WIDTH 77cm | 30.3"
HEIGHT 119cm | 46.9"
DEPTH 77cm | 30.3"
DIAMETER 77cm | 30.3"
WEIGHT NETTO 70kg | 154.32lbs

Packaging

WIDTH 96cm | 37.8"
HEIGHT 164cm | 64.6"
CUBAGE 1.51m³ | 53.38ft³
LENGTH 96cm | 37.8"
WEIGHT 100kg | 220.46lbs

Technical UL

MATERIAL

PE Sphere with PC and ABS lenses and chrome detailing

ENERGY LABEL

B

LIGHTSOURCE TYPE

LED

LIGHTSOURCE INCLUDED

Yes

NUMBER OF LIGHTSOURCES

161

SHAPE

Abstract

INPUT VOLTAGE

100-264V

FREQUENCY

50/60

MAX POWER CONSUMPTION

220W

LAMPHOLDER

LED (Solid state)

LIFETIME

50000 hours

CABLE COLOUR

Transparent with tinned cores

CABLE LENGTH

1000cm | 393.7"

CANOPY

White metal rectangle

COLOUR TEMPERATURE

2700 K

CRI

88

LIGHT OUTPUT

7019 lm

DIMMING & LIGHTING CONTROL

1-10V

See last page for more information about the dimming possibilities.



Dimming & Lighting Control

1-10V

The luminaire is dimmable by using an either internally mounted or externally placed 1-10V dimmer switch. 1-10V is a dimming system widely used in some parts of the world, for example in North-America. This method will need its own wiring. Dimming quality is perfect, without flicker, the range can be limited and the luminaire cannot be dimmed to off. To turn off the luminaire a switch is needed.

Compatible models: Iconic Eyes 161 CE, Iconic Eyes 161 UL, Iconic Eyes 85 CE, Iconic Eyes 85 UL
